

**M1.**

(a) • 65

it is different from the angle of incidence **or** all the others are the same

*accept 'number 4' or 'the fourth'*

*accept 'it is not 60°' or 'it should be 60°'*

*accept 'the angle of reflection and the angle of incidence should be the same'*

*accept 'it is 5° out'*

*accept 'they are not the same'*

**both** the answer and the correct explanation are required for the mark

award a mark for '60°' if the explanation is correct

*'they go up in tens' is insufficient*

*'it does not fit the pattern' is insufficient*

1 (L5)

(b) (i) • a number from 30 to 32

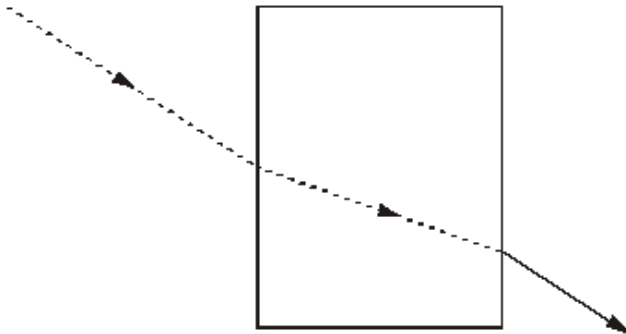
1 (L5)

(ii) • greater than

*accept 'greater' or 'bigger'*

1 (L5)

(c)



*accept a continuous straight line that bends away from the normal*

*accept a line without an arrow*

*The ray need not be parallel to the incident ray*

1 (L6)

[4]

**M2.**

(a) point E

*if more than one box is ticked award no mark*

1

(b) continuous ray from point to eye

*accept a ray coming either from point E*

**or** *from the answer to (a)*

1

straight lines to the mirrors at appropriate angles

*reflections must be at the surfaces of the mirrors and lines must **not** extend behind the mirrors*

*the angle between the incident and the reflected rays should be approximately 90°*

*this mark may be awarded even if the reflection from the second mirror to the eye is **not** given*

1

arrow anywhere along ray pointing from tree to eye

1

(c) any **one** from

- move bottom of periscope towards wall

*accept 'tilt it' **or** 'change the angle'*

- make it upright

- lift it higher

*accept 'move it up' **or** 'push periscope further over the wall'*

*accept 'change angle of top mirror'*

***or** 'change angle of mirrors'*

*do **not** accept 'move it'*

1

[5]

**M3.** (a) any **one** from

- white light is a mixture of colours
- white light contains green light

1 (L7)

the green light passes through

*accept for two marks 'all the other colours are absorbed **or** filtered out'*

*accept for two marks 'only the green light passes through'*

1

(b) (i) red  
because red light passes through the filter

***both** the colour and explanation are required for the mark*

1 (L7)

(ii) black  
*accept 'she cannot see it'*

1 (L7)

any **one** from

- because red light will **not** pass through
- a green filter absorbs red light  
*accept 'only green light passes through'*

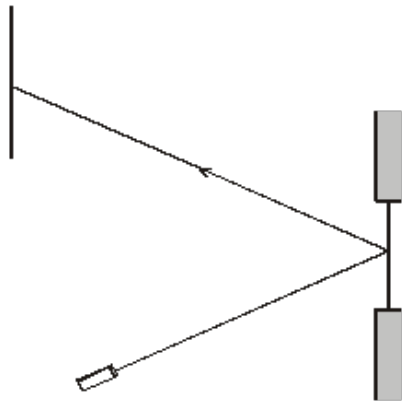
1

[5]

**M4.** (a) the angles of incidence and reflection must be equal

1 (L5)

the ray must be continuous and straight with an arrow  
in the correct direction



*accept one arrow in the correct direction on either  
the incident or the reflected ray  
the ray must hit the screen in the middle 2 cm*

1 (L5)

(b) (i) any **one** from

- sound waves travel to the window **or** glass  
*accept 'sound travels to the window'*
- vibrations pass through the air
- sound waves **or** vibrations hit the window  
*accept 'sound hits the window'*

1 (L5)

(ii) the beam will vibrate **or** move **or** jump about

*accept 'scatter' for vibrate*

*accept 'it would go to other places in the room'*

*accept 'it would go in different directions'*

*accept 'it shakes' **or** 'it wobbles'*

*do **not** accept 'it is blurred'*

*'it goes in a different direction' is insufficient*

1 (L5)

(c) B ✓

*if more than one box is ticked, award no mark*

1 (L6)

[5]

M5. (a) (i) • A and C

*letters may be in either order*

***both** the letter and the correct explanation  
are required for the mark*

*their amplitudes are the same*

*accept 'the waves are the same height'*

*'the height of the waves' is insufficient*

*accept 'they are equally tall'*

*'they are big **or** tall' is insufficient*

*'taller waves are louder' is insufficient*

*do **not** accept 'they are equally long'*

1 (L6)

(ii) • B and C

*letters may be in either order*

***both** the letter and the correct explanation  
are required for the mark*

*their frequencies are the same*

*accept 'the waves are the same distance apart'*

*'the distance apart of the waves' is insufficient*

*'the less spaced out the waves,*

*the higher the pitch' is insufficient*

*accept 'the wave lengths are the same'*

*'they are the same length **or** thickness **or** width' is insufficient*

*accept 'there are the same number of waves'*

1 (L6)

(iii) • its pitch becomes higher

*accept 'the frequency gets higher'*

*'it gets higher' is insufficient*

*'it becomes high' is insufficient*

1 (L6)

(b) • any number between 4.5 and 7.5 hours (inclusive)

1 (L5)

(c) any **one** from

- it vibrates with a greater amplitude  
*accept 'it moves more'*
- it has larger vibrations  
*accept 'burst ear drum'*  
*'it vibrates harder' and 'it vibrates more'*  
*are insufficient responses*  
*do **not** accept 'it vibrates faster'*

1 (L5)

[5]

M6. (a) (i) Paul, James, Sylvia

*accept 'light'; 'vibration'; 'sound'*  
*answers must be in the correct order*  
***all three** answers in the correct order*  
*are required for the mark*

1 (L7)

(ii) 3

*accept  $\frac{1020}{340}$ ,*

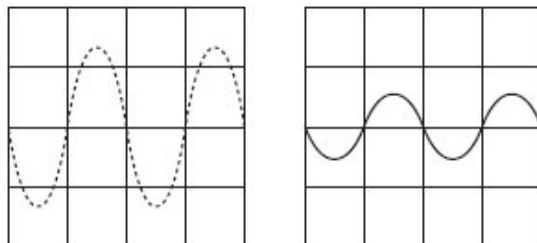
1 (L7)

(b) (i) the energy **or** the sound is more spread out

*accept 'some of the sound is absorbed by the air'*  
*accept 'the amplitude decreases'*  
*'vibrations decrease' is insufficient*

1 (L7)

(ii)



*award one mark for a wave with a smaller amplitude*  
*award one mark for a wave with the same frequency*  
*award the marks for a wave with the correct amplitude*  
*and frequency but which is not centred*  
*on the middle line of the grid **or** which is not in phase*  
*with the drawn wave*  
*the marks may be awarded for a wave drawn on Sylvia's grid*

2 (L7)

[5]

- M7.** (a) B 1 (L5)
- (b) (i) A and C 1 (L5)  
*accept 'lift and weight'*  
*answers may be in either order*  
***both** letters are required for the mark*
- (ii) D and B 1 (L5)  
*accept A and C*  
*answers may be in either order*  
***both** letters are required for the mark*
- (c) (i) • Force D is greater than force B. ✓ 1 (L6)  
*if more than one box is ticked, award no mark*
- (ii) • Force A is greater than force C. ✓ 1 (L6)  
*if more than one box is ticked, award no mark*
- [5]**

- M8.** (a) (i) any **two** from 2 (L6)
- gravity **or** weight
  - friction
  - reaction  
*accept 'upthrust'*
  - air resistance  
*accept 'drag'*  
*do **not** accept 'centrifugal force'*  
***or** 'centripetal force' **or** 'g- force'*
- (ii) any **one** from 1 (L6)
- constant speed
  - steady speed
  - it stays the same  
*accept 'it is the same' **or** 'it does not change'*
- (b) friction is less 1 (L5)  
*'it is smoother' **or** 'it is slippery' are insufficient*

(c) it increases

*accept 'he goes more quickly'*

1 (L6)

because there is less air resistance **or** friction

*accept 'he is streamlined **or** aerodynamic'*

1 (L6)

[6]

**M9.**

(a) (i) • distance from the (top of the) balloon to the ceiling

*accept 'distance' **or** 'height to ceiling **or** roof'*

**and**

time for the balloon to rise to the ceiling **or** roof

*accept 'time'*

**both** answers are required for the mark

*the answers can be in either order*

*'height (of ceiling)' is insufficient as this implies the distance from the floor*

*'how high it goes' is insufficient*

*'metres' is insufficient*

*'seconds' is insufficient*

1 (L7)

(ii) • divide the distance by the time

*accept  $\frac{\text{distance}}{\text{time}}$ , **or**  $\frac{d}{t}$ ,*

*'how many metres it travelled per minute **or** second' is insufficient*

*accept  $\frac{\text{height}}{\text{time}}$ , if height is given in part (i)*

*'m/s' is insufficient*

*accept 'distance over time'*

*$\frac{\text{metres}}{\text{seconds}}$*

*'seconds' is insufficient*

1 (L7)

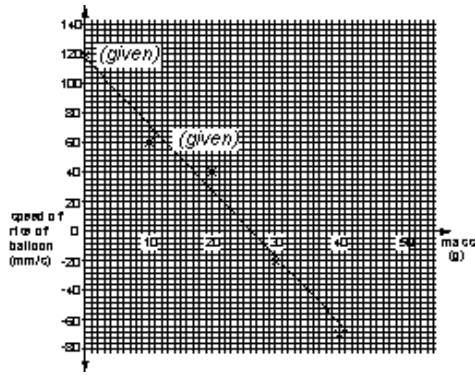
(b) (i) any **one** from

• the negative numbers

• the -20 **and/or** the -70

1 (L7)

- (ii) • all **three** points plotted correctly as shown below



*accept points plotted within  $\pm \frac{1}{2}$  small square of the correct answer*

1 (L6)

- an appropriate line of best fit as shown above  
*accept a line of best fit consistent with the plotted points*

1 (L7)

- (iii) • 26 g  
*accept the x axis intercept  $\pm 1$  small square from the line of best fit drawn*

1 (L7)

[6]



